

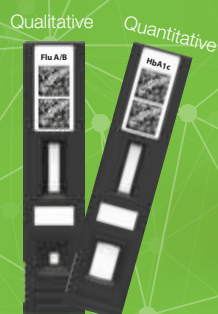
STANDARD F

Fluorescent Immunoassay System

STANDARD F100

STANDARD F200

STANDARD F2400



Supplied by:

**Oxford
BioSystems**



Tel: +44(0)1235 431390
sales@oxfordbiosystems.com
www.oxfordbiosystems.com




STANDARDTM



Connectivity with Mobile, Cloud and LIS/HIS



STANDARD F Specification

| Series | F 100 | F 200 | F 2400 |
|-----------------------|---|---|---|
| Image |  |  |  |
| Test method | Fluorescent immunoassay | | |
| Analysis | Quantitative & Qualitative test | | |
| Test capacity | 1 test each | 1 test each | 70 Tests per hour Random access |
| Quick test mode | Available | Available | Not Available |
| Power | AC/DC adapter or Battery(AA x 4) | AC/DC adapter | Power Cable (SMPS adapted) |
| Display | Graphic LCD | 7" Color Touch Screen | 10" Color Touch Screen |
| Printer | External | Built-in | Built-in |
| LIS /HIS connectivity | Bluetooth classic | <ul style="list-style-type: none"> HL7 v2.6(PCD-01) POCT1-A | <ul style="list-style-type: none"> HL7 v2.6(PCD-01) POCT1-A |
| Auto-ID | 2D barcode | 2D barcode | 2D barcode |
| Dimension (mm) | 105 x 135 x 100 | 200 x 240 x 205 | 510 x 566 x 297 |
| Accessories | Thermal printer | Mouse/keyboard Barcode scanner | Mouse/keyboard Barcode scanner |
| Weight | 0.7 kg | 2.5 kg | 20.0 kg |

Advantages of STANDARD F

User friendly interface
7" Color Touch Screen

Convenient report
Built-in Printer

Compact desktop
200 x 240 x 205
2.5 kg

Graphic LCD
Result is presented clearly and concisely

Portable system
Battery(AA x 4)
or AC/DC adapter

Minimized risk of contamination
Keep the entrance shut unless the testing is in progress. The dust cover protects against contamination.

Variable test parameters
23 test parameters are available now

Convenient process
Auto coding procedure by recognizing 2D barcode

Hand held size
105 x 135 x 100
700 g



- Connectivity**
- Direct LIS/HIS
 - HL7 v2.6(PCD-01)
 - POCT1-A



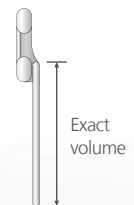
Calibration Set



Control Bead



Control Swab



Exact volume

- Reliable result**
Provide Calibration Set and Control reagent having more confidence in the result.

- Accurate result**
Take an accurate collection with Fixed volume dropper.

STANDARD F Analyzers are qualitative and quantitative fluorescent immunoassay systems and have been designed for easy and reliable measuring of diverse parameters. STANDARD F series offers 3 different models that can be used depending on your workflow requirements. **Rapid, highly accurate and reliable results help you to reduce uncertainty of treatment and make better the quality of patients care.**

Technical Advantages

1. Simple and easy to use

Familiar lateral flow test platform

2. Europium-based fluorescent chemistry

Large Stoke's shift permits sensitive fluorescence detection and narrow emission peak permits multiplex detection.

3. Random access and No-coding via 2D barcode system

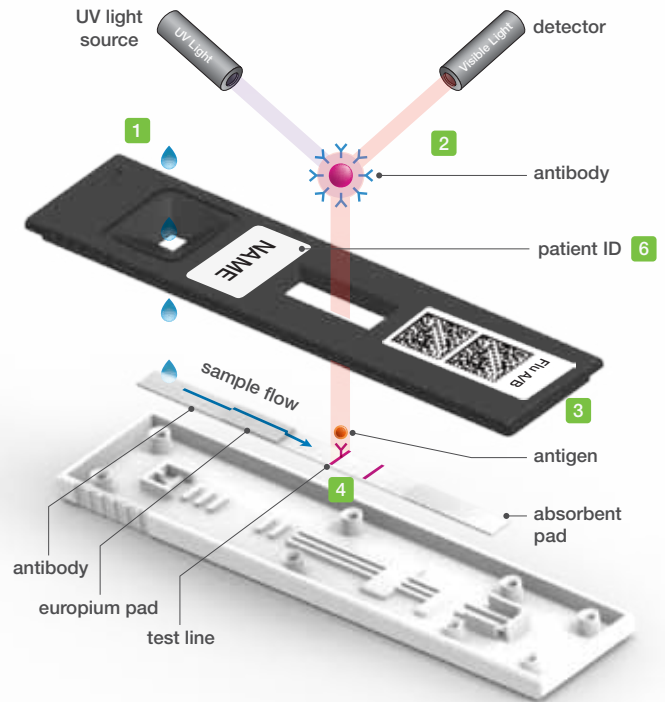
Automatic strip recognition (item, Lot No., serial No., coding information, expiry date)

4. Internal quality control

The control line checks that the test has progressed completely and correctly.

5. Time saving by early detection

In case of high titer samples, the analyzer automatically shows the test results in 1.5 minutes. (Influenza A/B)



6. Name awareness

STANDARD F Analyzer scans and prints a handwritten patient ID on the device, which allows of double checking the patient ID labeled on the sample.



Simple Test Procedure

STANDARD TEST mode

Automated procedure for single test



Insert the strip to initiate test processing.



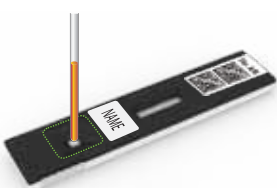
Apply the specimen into a strip.



Read the result when completed.

READ ONLY mode (only for the qualitative test items)

High-throughput procedure for multiple tests



Apply the specimen into a strip.



Leave the strip outside of the analyzer. Wait for the required time.



Insert the strip into the analyzer. It will take less than 1 minute for the result.

STANDARD F Enables Accurate Detection of Diseases

Outstanding Sensitivity of Qualitative FIAs - STANDARD F Influenza A/B FIA



STANDARD F Influenza A/B FIA is at least 4 times more sensitive than commercialized ICT

| Influenza A | | ICT | STANDARD F |
|-------------|---------|-----|------------|
| No. | PFU/ml | | |
| 1 | 310,000 | + | + |
| 2 | 31,000 | + | + |
| 3 | 3,100 | - | + |
| 4 | 310 | - | + |
| 5 | 155 | - | + |
| 6 | 78 | - | + |
| 7 | 39 | - | +/- |
| 8 | 19 | - | - |

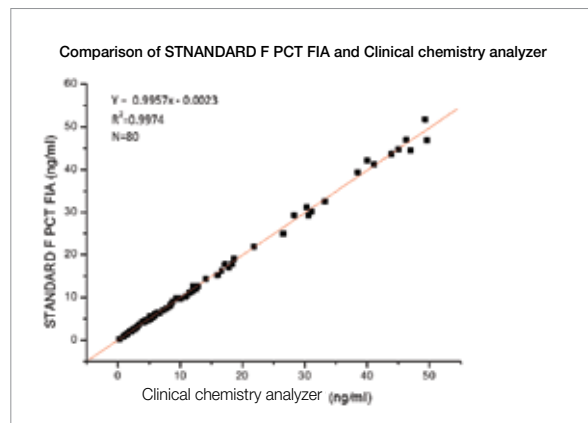
| Influenza B | | ICT | STANDARD F |
|-------------|--------|-----|------------|
| No. | PFU/ml | | |
| 1 | 22,000 | + | + |
| 2 | 2,200 | + | + |
| 3 | 220 | - | + |
| 4 | 22 | - | + |
| 5 | 11 | - | +/- |
| 6 | 6 | - | - |

Highly Accurate Result of Quantitative FIAs - STANDARD F PCT FIA



There is a high correlation between STANDARD F and clinical chemistry analyzer

| Slope | Correlation | CV |
|--------|-------------|-----|
| 0.9957 | 0.9987 | 10% |



STANDARD F Covers a Wide Scope of Medical Diagnostic Test



Ordering Information

STANDARD F Analyzers

| Cat No. | Description | Unit | Printer | Weight | W(mm)/L(mm)/H(mm) |
|---------|-------------|------|----------|---------|-------------------|
| 10FA10 | F100 | 1 | External | 0.7 kg | 105 x 135 x 100 |
| 10FA20 | F200 | 1 | Built-in | 2.5 kg | 200 x 240 x 205 |
| 10FA24 | F2400 | 1 | Built-in | 20.0 kg | 510 x 566 x 297 |

STANDARD F Tests

| Category | Cat. No. | Test item | Sample type | Sample volume | Time to result | Type | Test /kit |
|----------------------|----------|-----------------------------|---------------------|------------------------------------|--------------------------|------|-----------|
| Respiratory disease | 10INF10D | Influenza A/B FIA | Nasal swab | - | 1.5~10 mins | QL | 25 |
| | 10RSV10D | RSV Ag FIA | Nasopharyngeal swab | - | 5~15 mins | QL | 25 |
| | 10STR10D | Strep A Ag FIA | Throat swab | - | 5 mins | QL | 25 |
| | 10LEG10D | <i>Legionella</i> Ag FIA | Urine | 100 μ l | 5~15 mins | QL | 25 |
| | 10SPN10D | <i>S. pneumoniae</i> Ag FIA | Urine | 100 μ l | 5~10 mins | QL | 25 |
| Vector borne disease | 10ZK10D | Zika Ag FIA | WB/S/P | 100 μ l | 15 mins | QL | 25 |
| | 10ZK20D | Zika IgM/IgG FIA | WB/S/P | 10 μ l | 15 mins | QL | 25 |
| | 10DEN10D | Dengue NS1 Ag FIA | WB/S/P | 100 μ l | 15 mins | QL | 25 |
| | 10DEN20D | Dengue IgM/IgG FIA | WB/S/P | 10 μ l | 15 mins | QL | 25 |
| | 10CHI10D | Chikungunya IgM/IgG FIA | WB/S/P | 10 μ l | 15 mins | QL | 25 |
| Hepatitis | 10HCV10D | HCV FIA | WB/S/P | 10 μ l | 15 mins | QL | 25 |
| Cardiac marker | 10CKM10B | CK-MB FIA | WB/P | 100 μ l | 15 mins | QN | 20 |
| | 10TNI10B | TnI FIA | WB/P | 100 μ l | 15 mins | QN | 20 |
| | 10HSC10B | hs-CRP | WB/S/P | 5 μ l | 3 mins | QN | 20 |
| | 10DDI10B | D-dimer FIA | WB/P | 10 μ l | 3 mins | QN | 20 |
| Inflammation | 10CRP10B | CRP | WB/S/P | 5 μ l | 3 mins | QN | 20 |
| | 10PCT10B | PCT FIA (Serum) | S | 50 μ l | 15 mins | QN | 20 |
| | 10PCT20B | PCT FIA | WB/S/P | 100 μ l | 15 mins | QN | 20 |
| Chronic disease | 10A1C10B | HbA1c | WB | 5 μ l | 3 mins | QN | 20 |
| | 10UAL10B | U-Albumin FIA | Urine | 3 μ l | 5 mins | QN | 20 |
| Hormone | 10BHC10B | β -hCG FIA | WB/S | 100 μ l | WB: 10 mins S: 5 mins | QN | 20 |
| | 10TSH10B | TSH FIA | S/P | 100 μ l | 15 mins | QN | 20 |
| Tumor marker | 10PSA10B | PSA FIA | WB/S/P | WB: 10 μ l S/P: 100 μ l | 10 mins | QN | 20 |

- Storage Temperature: 2-30°C/36-86°F - WB: Whole blood, S: Serum, P: Plasma, QL: Qualitative, QN: Quantitative

STANDARD F Controls

| Cat No. | Description | Test/kit | Cat No. | Description | Test/kit |
|----------|--------------------------------|-----------|----------|-------------------|-----------|
| 10INFC10 | Influenza A/B Control | 10T / kit | 03ACS10 | SDB HbA1c Control | 10T / kit |
| 10RSVC10 | RSV Ag Control | 10T / kit | 10UALC10 | U-Albumin Control | 10T / kit |
| 10STRC10 | Strep A Ag Control | 10T / kit | 03CCS10 | SDB CRP Control | 10T / kit |
| 10LEGC10 | <i>Legionella</i> Ag Control | 10T / kit | 10PCTC10 | PCT Control | 10T / kit |
| 10SPNC10 | <i>S.pneumoniae</i> Ag Control | 10T / kit | | | |

- Storage Temperature: 2-30°C/36-86°F

Available Soon

HIV-1/2 Ab, HBsAg, Adenovirus Ag, *C. difficile* A/B GDH, Vitamin D, Cystatin C, AFP, CEA, FOB, LH, T3, T4

Head Office C-4&5Floor, 16, Deogyong-daero 1556beon-gil, Yeongtong-gu, Suwon-si, Gyeonggi-do, 16690, REPUBLIC OF KOREA

Factory 74, Osongsaengmyeong 4-ro, Osong-eup, Heungdeok-gu, Cheongju-si, Chungcheongbukdo, 28161, REPUBLIC OF KOREA

Tel +82-31-300-0400 **Fax** +82-31-300-0499 **E-mail** sales@sdbiosensor.com **Website** www.sdbiosensor.com

LEF-FSYST-EN / SDC.1710 © 2017 SD BIOSENSOR. All rights reserved.